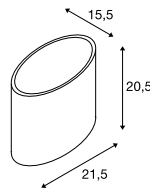
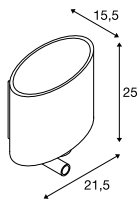


KENKUA SPOT  
WL, E27

KENKUA  
WL, E27



220-240V ~50/60Hz  
Material: Stahl / Glas

100-240V ~50/60Hz | 700mA  
Systemleistung: 2W  
Material: Stahl / Glas

- Lichtquellen an der Leuchte getrennt schaltbar

Spot	200lm 3000K	

E27 <40W  
Ø: 6,5 cm L: 12 cm

E27 <40W

LED E27 | 9W | 220°  
 2700K | 800lm | EEK=F  
 9kWh/1000h

Art. Nr. 1005301 | 7,35 EUR

LED E27 | 13,2W | 220°  
 2700K | 1300lm | EEK=F  
 13kWh/1000h

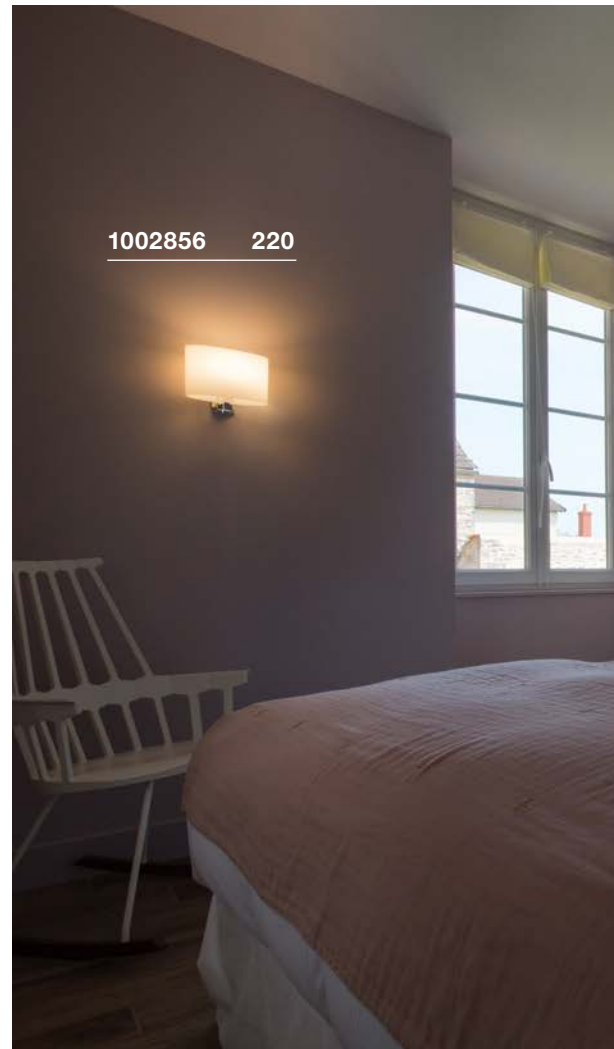
Art. Nr. 1005302 | 13,70 EUR

Variante	Art. Nr.	EUR
1xE27 200lm   3000K   CRI80 chrom / milchig	1002855	206,00

Variante	Art. Nr.	EUR
1xE27 chrom / milchig	1002856	137,00



155670 221



1002856 220