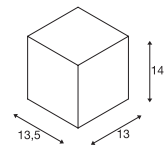
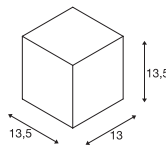
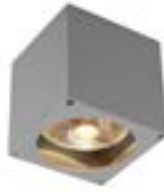




BIG THEO WL, QPAR111

BIG THEO WL



IP 44

220-240V ~50/60Hz
Material: Aluminium / Glas



Socket: 1xGU10

Variante	Art.Nr.	EUR
● anthrazit	229565	113,00
● grau	229564	113,00



100-277V ~50/60Hz | 500mA
Systemleistung: 21W
Material: Aluminium / Glas



Down

2000lm | 3000K

Variante	Art.Nr.	EUR
● anthrazit	234525	224,00



QPAR111 | 12.5W | 10°
3000K | 950lm | EEK=F
13kWh/1000h



Art. Nr.: 1005278 | 55,00 EUR

234525 737